

Charm Tote Tote Pattern



Tote is 16½" × 16" × 2"

Grab your favorite charm packs and join us for the Summer Charm QAL: 3 projects bursting with charm and perfect for quick summer sewing. Follow and share on social media with **#ModaSummerCharmQAL**.



FABRIC REQUIREMENTS

- 1 Moda Charm Pack or **(34)** 5" squares
- ¼ yard for Straps
- ½ yard for Lining

CUTTING

1. From the Charm Pack:
 - Select **(34)** squares. From each square, cut **(2)** 2½" × 5" strips.
2. From the straps fabric:
 - Cut **(2)** 3½" × 38" strips or adjust length to fit.
3. From the lining fabric:
 - Cut **(1)** 16 ½" × 36" rectangle.

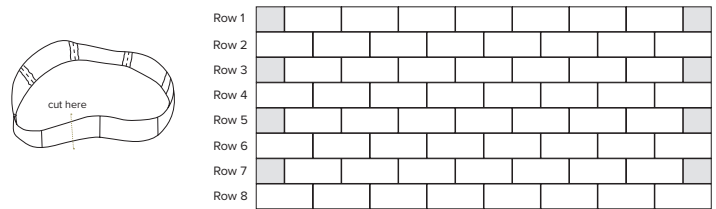
INSTRUCTIONS

Use ¼" seam allowance unless otherwise instructed.
RST = right sides together.

1. Prepare straps.
 - With RST, press a 3½" × 38" strip in half lengthwise.
 - Stitch together and turn right side out. Make **(2)**.

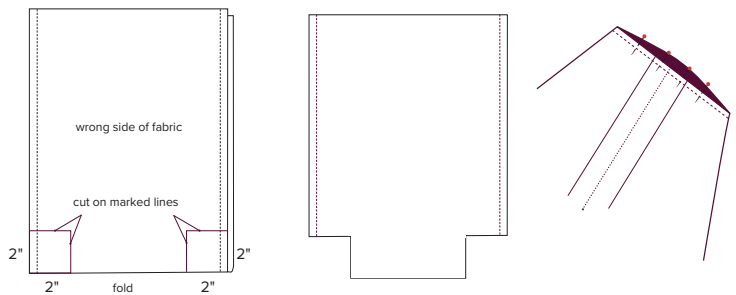
2. Make Patchwork.

- Choose **(34)** Charm squares. Cut each square in half. Join the 2½" × 5" strips into **(8)** rows of **(8)**.
- Join the ends of **(4)** of the rows to make circles.
- Cut each of the **(4)** circles halfway between two seams to help stagger the rectangles.
- Join the **(8)** strips together to make the patchwork.



3. Make Bag and Lining.

- Fold patchwork rectangle, RST, matching the 16½" top edges. Pin and stitch ½" side seams.
- Draw 2" right angles at each bag bottom corner and cut on marked lines.
- Fold bottom corner cut openings together so that the side seam falls centered on the opposite side of the opening. Stitch together using a ¼" seam and stitch a reinforcing seam ⅛" beyond the first seam.
- Repeat using 16½" × 36" lining rectangle.



4. Assemble Charm Tote.

Begin with the charm bag turned right side out and the lining turned wrong side out.

- Fold over ½" around the the top edge of both the Charm bag and lining (*charm bag fold inward and lining fold outward*).
- Position ends of straps on opposite sides on the inside of the Charm bag. Pin.
- Place lining inside Charm bag.
- Match and pin seams and edges of Charm bag and lining together. Check that the ends of the straps are sandwiched between the Charm bag and lining.
- Top stitch ¼" from edge of bag. Sew a second row of top stitching ¼" from original (*along rim edge*).

Be sure to share using **#ModaSummerCharmQAL** on social media!