



Butterflies in the Meadow

Measures: 64" x 90"
 Stock #: CHD 1107/CHD 1107G
 Retail: \$10.00

"Butterflies in the Meadow"

- 3/4 yd Scroll on White for blocks and appliqué (Moda 19484-11)
- 1/8 yd Scroll on Green for appliqué (Moda 19484-14)
- 1 3/4 yd Dragonflies on Blue for blocks (Moda 19485-15)
- 5/8 yd Dragonflies on Orange for blocks and appliqué (Moda 19485-17)
- 1 1/4 yd Dragonflies on Green for blocks (Moda 19485-14)
- 1 1/4 yd Dragonflies on Pink for blocks and appliqué (Moda 19585-13)
- 5/8 yd Dots on Pink for blocks and appliqué (Moda 19486-12)
- 1/2 yd Dots on Blue for blocks and appliqué (Moda 19486-14)
- 2 1/2 yd Dots on Brown for blocks, appliqué and binding (Moda 19486-15)
- 5/8 yd Dots on Green for blocks and appliqué (Moda 19486-13)
- 3 7/8 yd Backing Fabric

CHD 1107



CHD 1107G



Turtles in the Meadow

Measures: 64" x 90"
 Stock #: CHD 1108/CHD 1108G
 Retail: \$10.00

"Turtles in the Meadow"

- 1 yd Frogs on Blue for blocks (Moda 19492-14)
- 1/3 yd Dragonflies on Orange for blocks and appliqué (Moda 19485-17)
- 1/4 yd Dragonflies on Green for blocks (Moda 19485-14)
- 3/4 yd Dragonflies on Blue for blocks (Moda 19485-15)
- 1 1/4 yd Dots on Orange for blocks (Moda 19486-16)
- 3/8 yd Dots on Blue for blocks and appliqué (Moda 19486-14)
- 2 1/2 yd Dots on Brown for blocks, appliqué and binding (Moda 19486-15)
- 3/4 yd Dots on Yellow for blocks and appliqué (Moda 19486-17)
- 1/4 yd Dots on Green for blocks (Moda 19486-13)
- 3/8 yd Scroll on White for blocks and appliqué (Moda 19484-12)
- 1/8 yd Scroll on Green for appliqué (Moda 19484-14)
- 1 yd Bugs on Green for Blocks (Moda 19490-13)
- 3/8 yd Geometric for appliqué (Moda 19491-13)
- 3 7/8 yd Backing Fabric

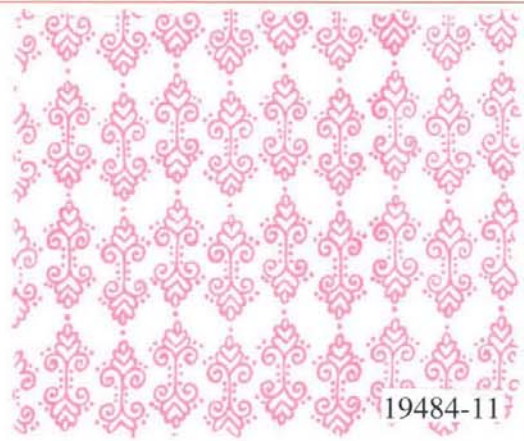
CHD 1108

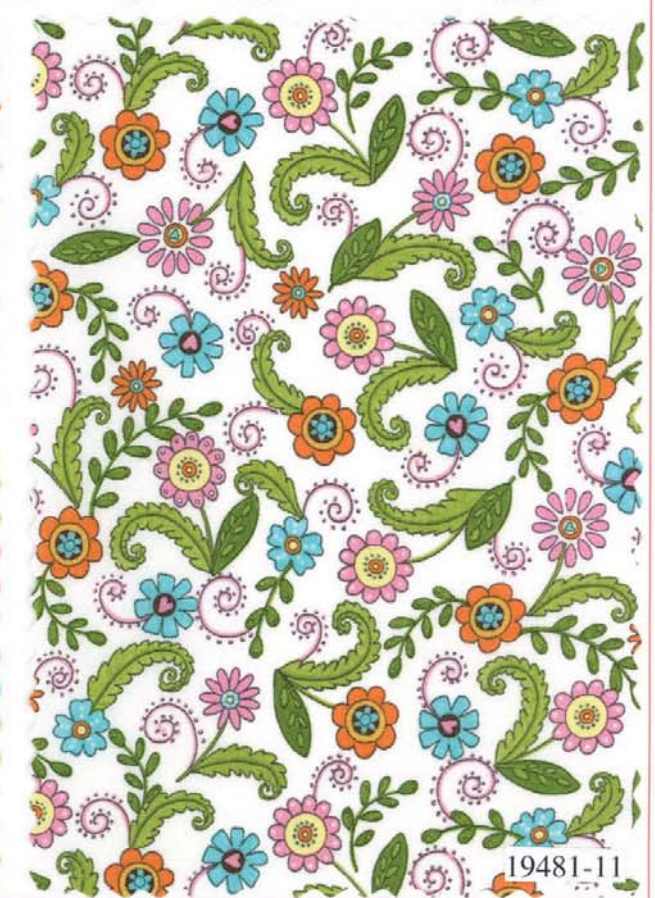
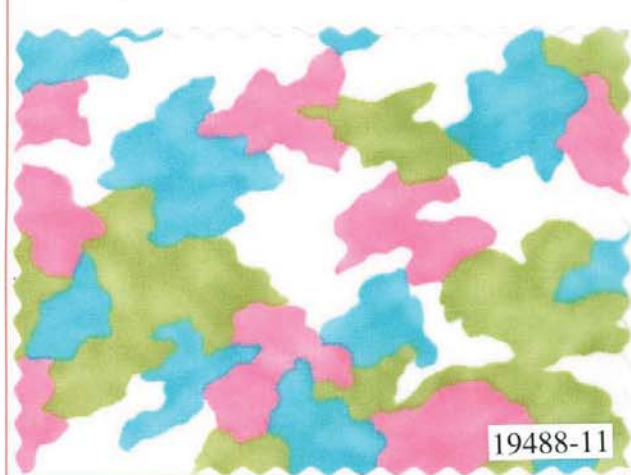
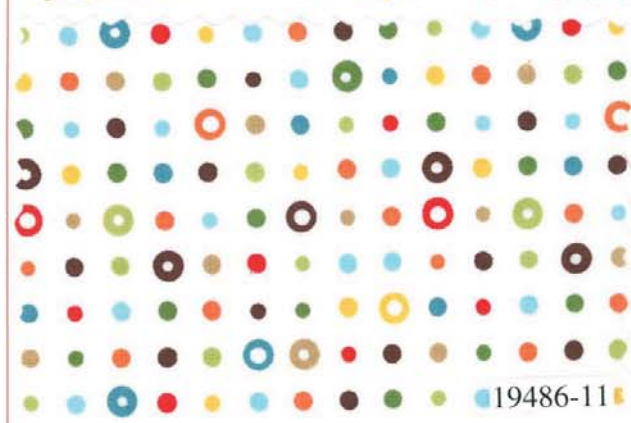


CHD 1108G



Yardages provided at the time of printing may change. Please consult the printed pattern before cutting kits.

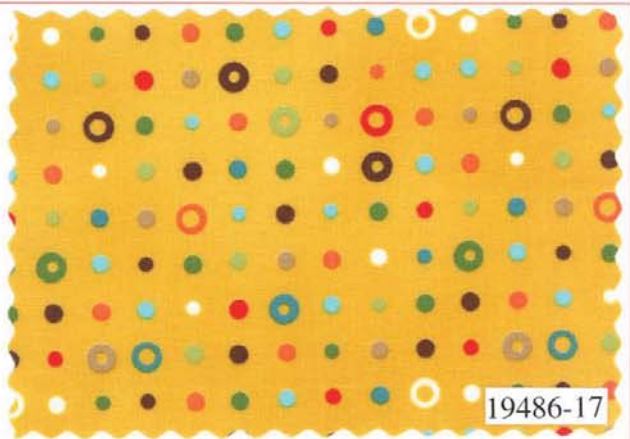




Page 3 of 8
Sunshine Yellow
Dragonfly Orange



19493-17



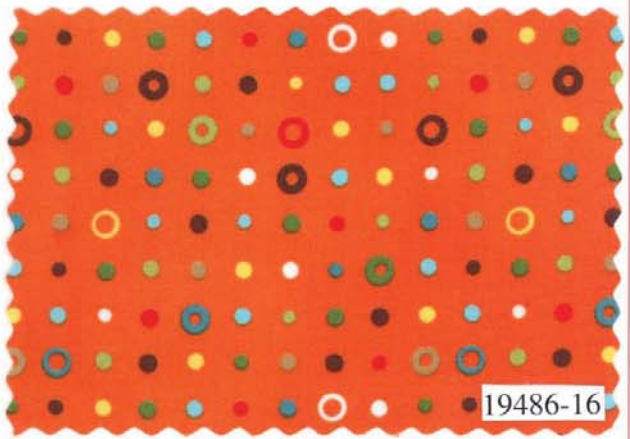
19486-17



19484-17



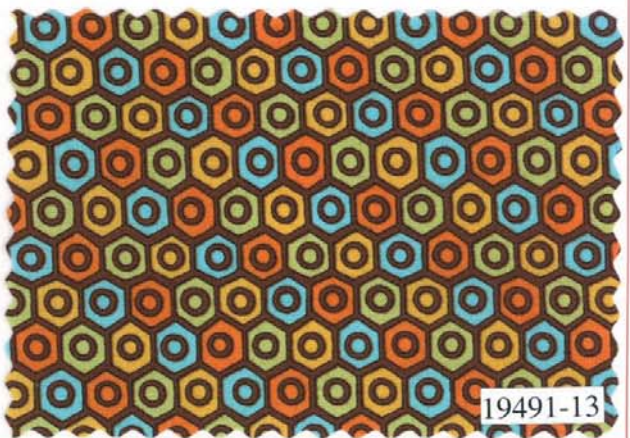
19485-17



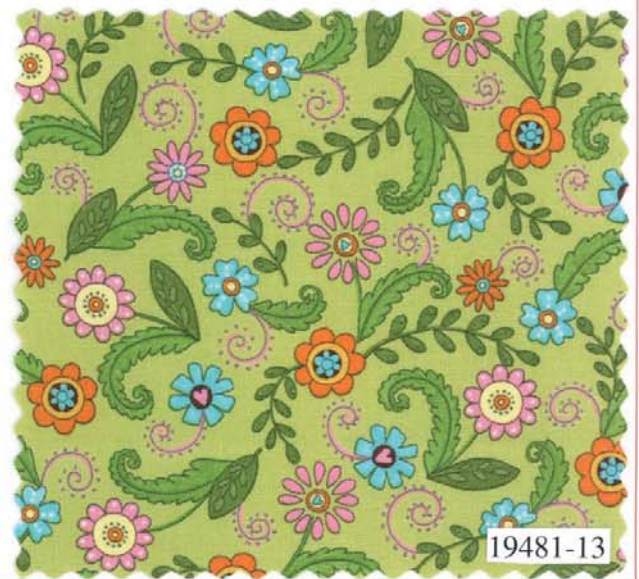
19486-16

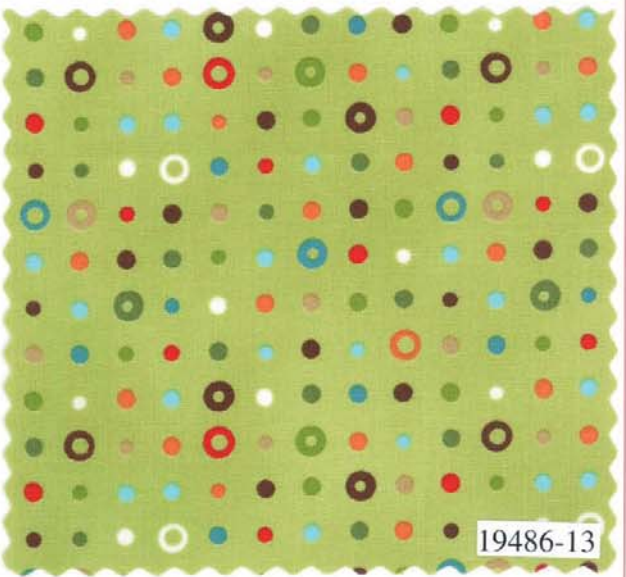


19492-16

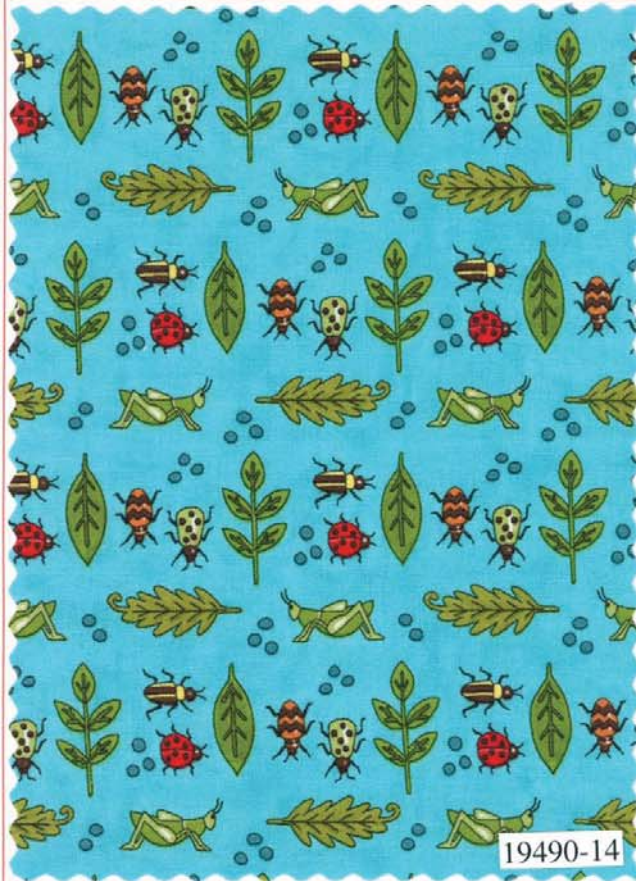


19491-13











19489-15



19488-16



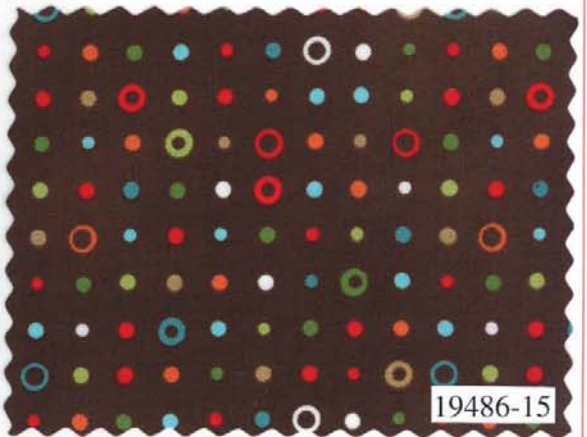
19493-15



19492-15



19490-15



19486-15