

The Washi print by Rashida Coleman-Hale has been around for over a decade now, and has made several surprise appearances over the years. We are so excited to bring this iconic print back as the star of its own collection!

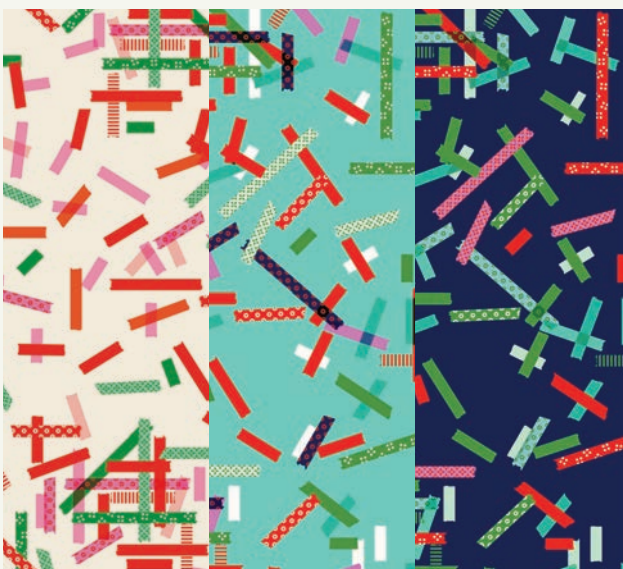
2012

The first instance of Washi was in Rashida's collection, aptly titled Washi, for Timeless Treasures! It was actually Rashida's second collection of all time! Washi came out in the spring of 2012, and was a huge hit with the growing modern fabric audience.

The dress on the right is from Rae Hoekstra, called the Washi dress in 2012 but now called the Trillium Dress.



2015



The second time Washi made an appearance was in 2015, in the Cotton + Steel collaborative holiday collection, Tinsel! The colors were a perfect modern spin on a holiday collection.

2022



The next iteration of Washi was in another holiday collection, this time for Ruby Star Society. The 2022 collection was called Jolly Darlings, and the idea behind it was to bring in the designers' most iconic prints and make them jolly! Washi was a shoe-in for this collection.



In 2012, Rashida whipped up this pattern to go with her very first Washi collection, and it is a perfect fit for her new Washi group as well!

CRAZY STAR BLOCK TUTORIAL

MAKING THE BLOCK:

Print the 3 templates linked to the QR code. The block is quite large, so you'll need to print the template on 8½" x 14" legal size paper. Do not scale!!

Cut out 8 background pieces using Template 'A'. When cutting out template 'A' cut out 4 prints, then flip the template over and cut out the remaining 4 prints.

Cut 8 assorted prints using Template 'B'. When cutting out template 'B' cut out 4 prints, then flip the template over and cut out the remaining 4 prints.

Cut 4 background pieces using Template 'C'.

Once you've finish cutting lay out your fabric in the order that you would like. Something like this:



To assemble the 10½" block lay one printed piece ('B') on the mat in front of you right side up. Place one piece ('C') on top RST, lining up the seams. I usually just eyeball it when lining the edges up. You'll want your stitch to start and end right in the middle of where the pieces intersect.

WHAT YOU NEED:

- 1 cotton solid for the background
- 8 assorted cotton prints for the stems
- Templates



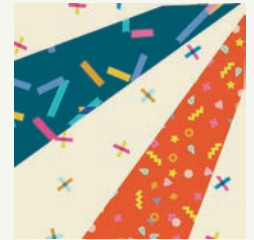
[TEMPLATES HERE](#)

It's exactly ¼", so don't be scared, stitch away! Repeat this step with the remaining print on the other side. Press the seams open.

Now place the piece you just made on the mat in front of you right side up and place one piece ('A') RST on top. Just like you did before, eyeball the seam and begin and end your stitch right where the seams intersect. I promise it's ¼"! Don't worry if they're not perfect, you'll have a chance to square them up later on.

Press all of your seams open... and you should have a 10½" block that looks like this!

Repeat the above process until you have a total of four 10½" x 10½" blocks. I like to square them up a bit as well before I continue assembling.



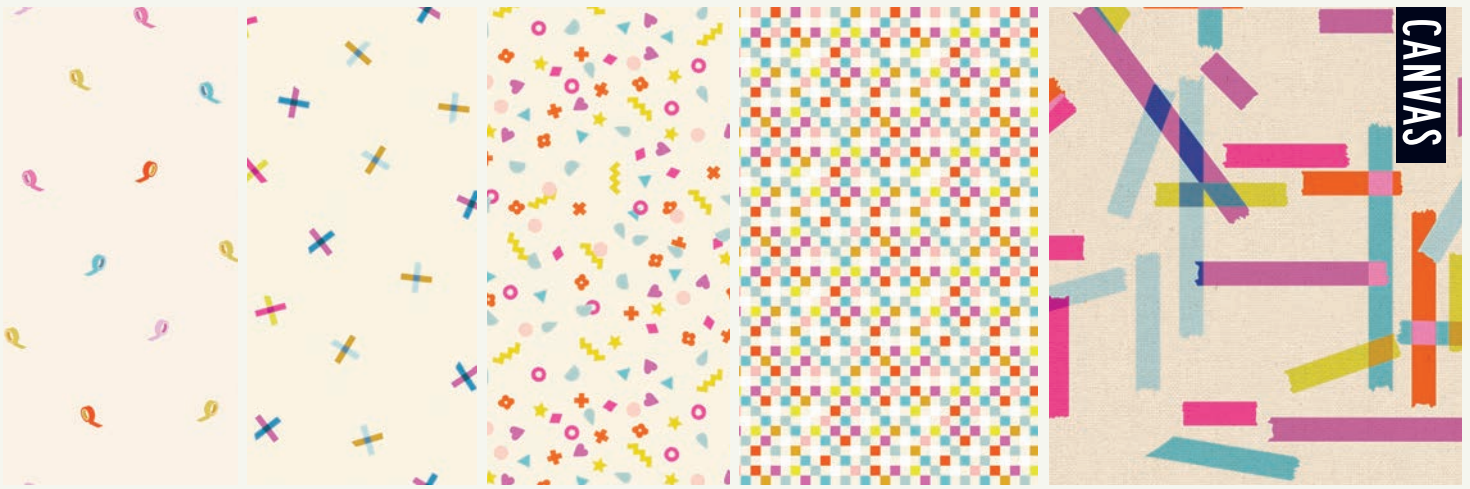
Take two of your blocks and lay one on top of the other RST lining up your seam lines. Stitch them together down one edge. Repeat with the other two blocks. Press your seams open.

YOU DID IT! YOU MADE A CRAZY STAR BLOCK!

The colorways below are all the newest Washi colors! Rashida has brought back this print in two different collections, now much more graphic and using some of the most popular Ruby Star Society colors! The three left colors are in Rashida's previous collection Salutations, and the four colors on the right are the newest colorways in Washi Plus!

2025





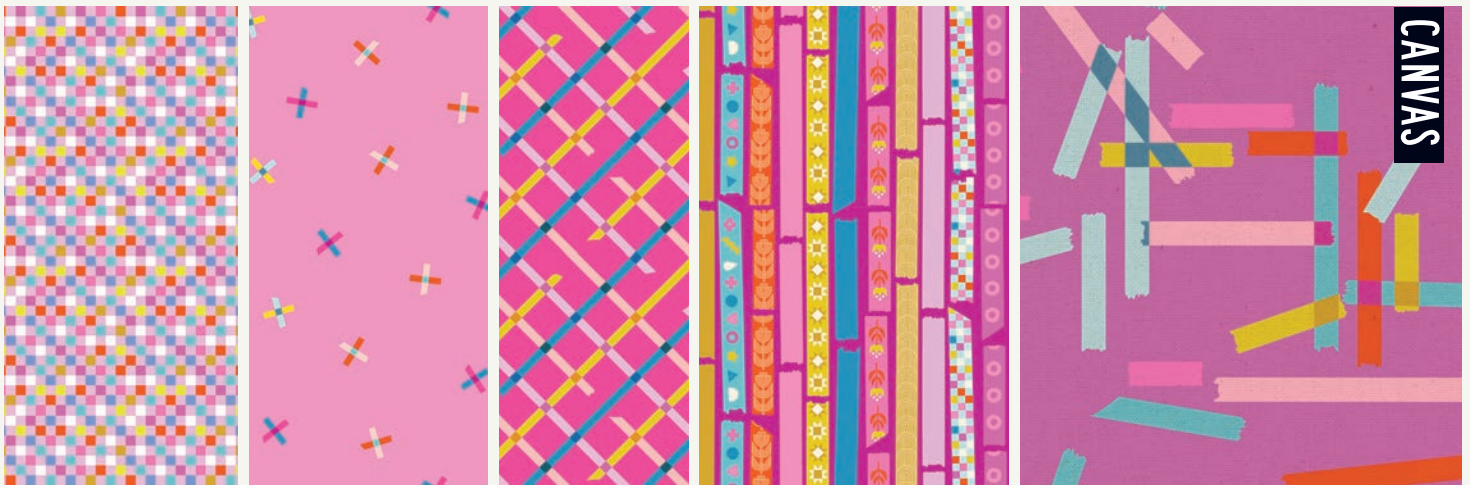
RS1101 13
ROLL WITH IT | NATURAL

RS1103 11
PLUS POINTS | NATURAL

RS1105 11
MORE STUFF | NATURAL

RS1102 11
CHECKMATE | NATURAL

RS1106 11L
WASHI TAPE CANVAS | NATURAL



RS1102 12
CHECKMATE | MACARON

RS1103 13
PLUS POINTS | DAISY

RS1104 13
OFF GRID | PLAYFUL

RS1098 17L
FORGET ME NOT CANVAS | HELIOTROPE

RS1106 13L
WASHI TAPE CANVAS | HELIOTROPE



RS1103 15
PLUS POINTS | TURQUOISE

RS1104 15
OFF GRID | BRIGHT BLUE

RS1106 17L
WASHI TAPE CANVAS | CERULEAN

RS1100 13
YAY ITS TAPE | BLUEBELL



AUGUST 2025 DELIVERY

23 premium 100% Ruby Star Cotton prints
3 Cotton/Linen Canvas Prints (70% cotton, 30% linen)

ASSORTMENTS & PRECUTS

ASSTRS1090

15

10

RS1090

FQ

JR

LC

MC

PP

ALL PRINTS SHOWN AT 30% SCALE

COORDINATES & COMPLEMENTS



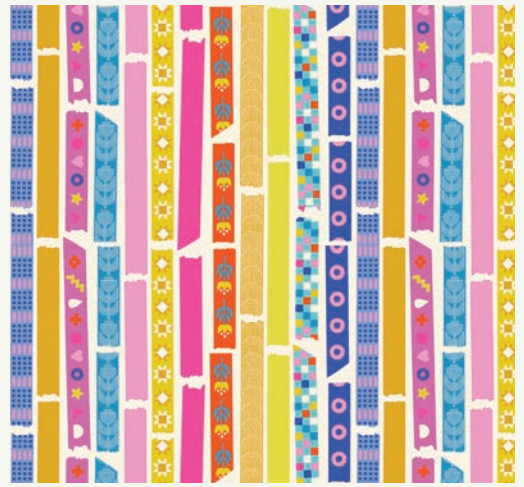
RS1101 15
ROLL WITH IT | CITRON



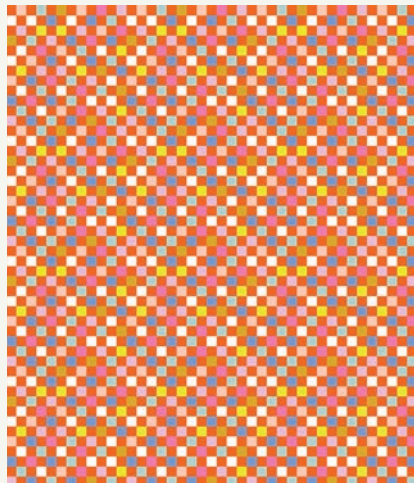
RS1105 12
MORE STUFF | GOLDEN HOUR



RS1090 12
WASHI | GOLDEN HOUR



RS1100 11
YAY ITS TAPE | NATURAL



RS1102 13
CHECKMATE | GOLDFISH



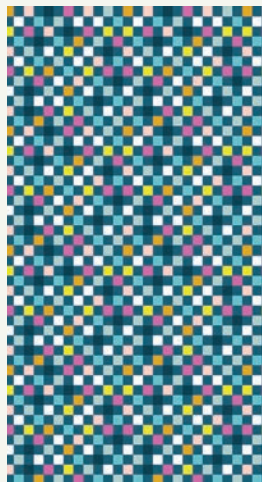
RS1104 14
OFF GRID | GOLDFISH



RS1105 13
MORE STUFF | GOLDFISH



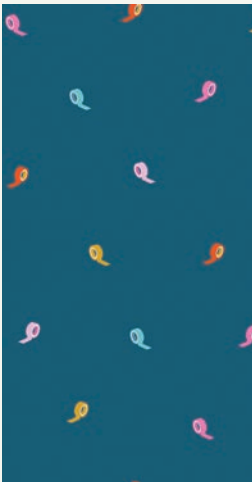
RS1090 17
WASHI | GOLDFISH



RS1102 14
CHECKMATE | TEAL



RS1090 14
WASHI | TEAL



RS1101 12
ROLL WITH IT | TEAL



RS1090 16
WASHI | BLUEBELL



CONFETTI RS5027 90



GOLDENROD RS5027 112



EARTH RS5027 26M



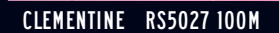
LUPINE RS5027 121



LINDLEY BLUE RS5027 127M



GOLDEN HOUR RS5027 111M



CLEMENTINE RS5027 100M



WARM RED RS5027 35M



DAISY RS5027 41M



POLAR RS5027 101M



© RASHIDA COLEMAN♥HALE

JUST PUT SOME TAPE ON IT!



WASHI PLUS

© RASHIDA COLEMAN♥HALE



OEKO
TEX

www.rubystarsociety.com



100% COTTON
MADE IN PAKISTAN

★ RUBY STAR SOCIETY ★



AUGUST 2025 DELIVERY

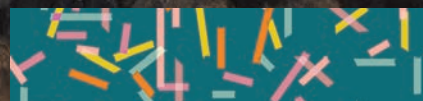
3 premium 108" cotton widebacks



A. RS1116 11
WASHI PLUS WIDEBACK | NATURAL



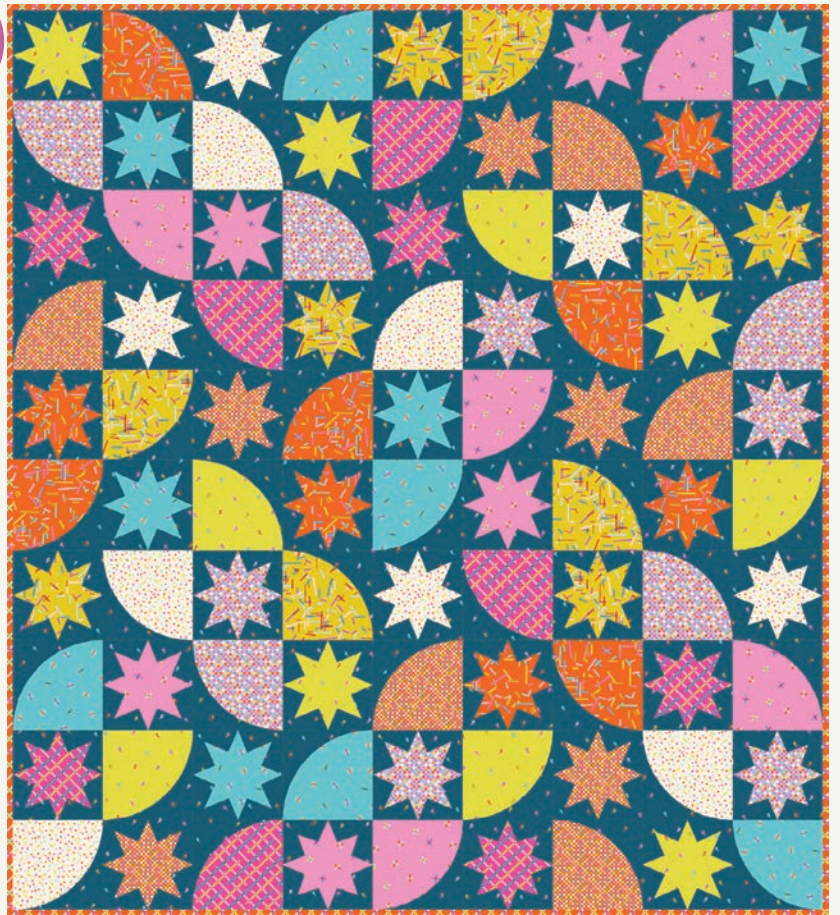
B. RS1116 12
WASHI PLUS WIDEBACK | GERANIUM



C. RS1116 13
WASHI PLUS WIDEBACK | STORYTIME



ES 546BOX Everyday Stitches | Boxed Up 72" x 96"



MCQ 022 Megan Collins | Spark 63" x 70"

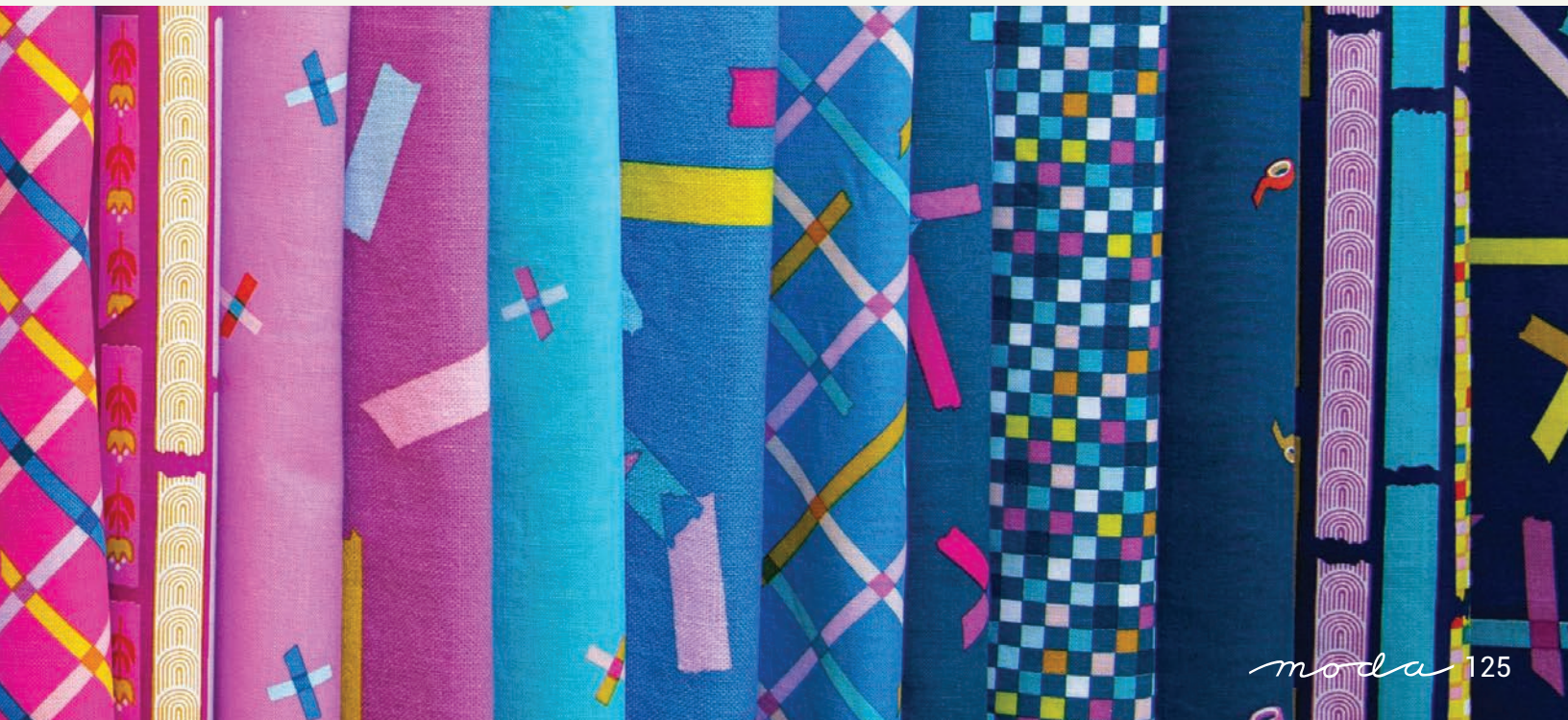


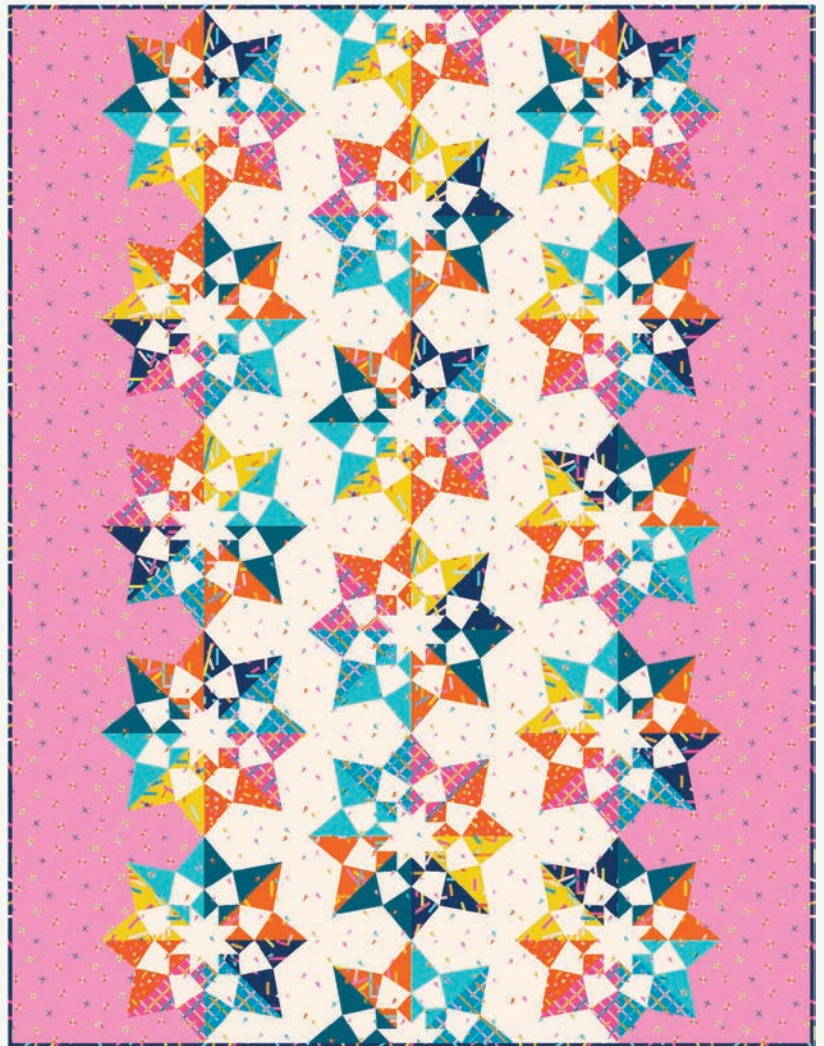


CKQ 2414 Copper Kettle Quilt Co | Wishi Washi 64½" x 80½"



KTQ 172 Kitchen Table Quilting | The Charlotte Quilt 56" x 68"





MMD 1138 Meadow Mist Designs | Wishing Star

54" x 70"



MCQ 019 Megan Collins | Meant To Be

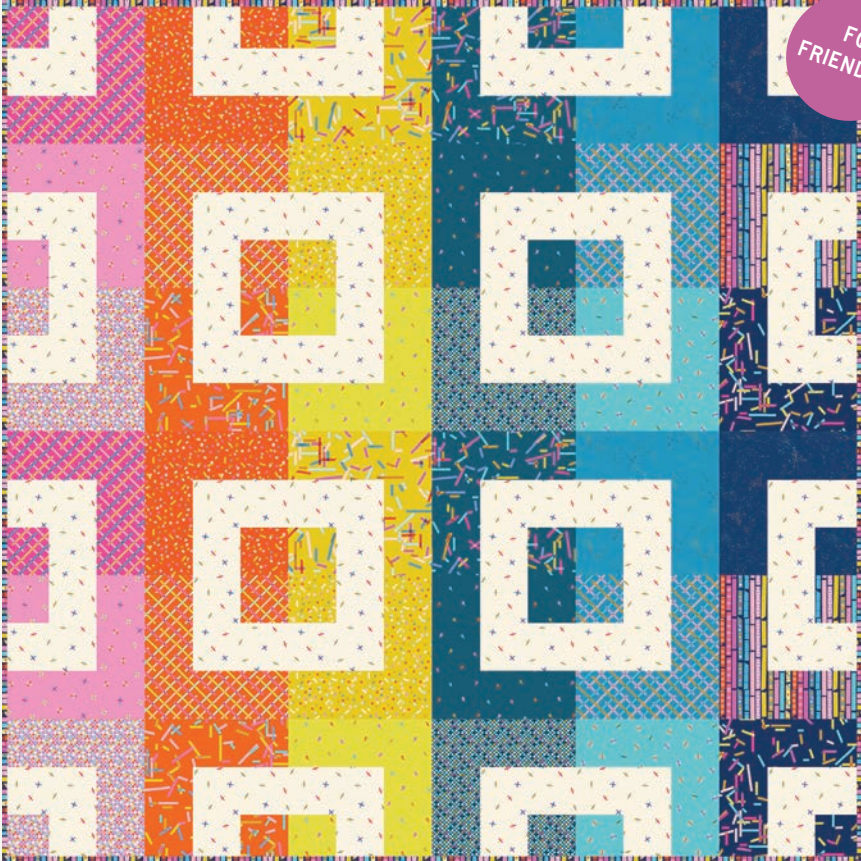
74" x 74"



LC FRIENDLY!

MMD 1103 Meadow Mist Designs | Board and Batten

56" x 64"



FQ FRIENDLY!

HCD 005 Holly Clarke Design | Dialogue Cabin

72" x 72"

